

Viking Hand Dryer User Manual

Product code 3312

handydryers

01279 466500

www.handydryers.co.uk

Handy Dryers,
Unit 9 Stort Valley Industrial Estate,
Bishops Stortford,
Hertfordshire,
CM23 2TU

Contents:

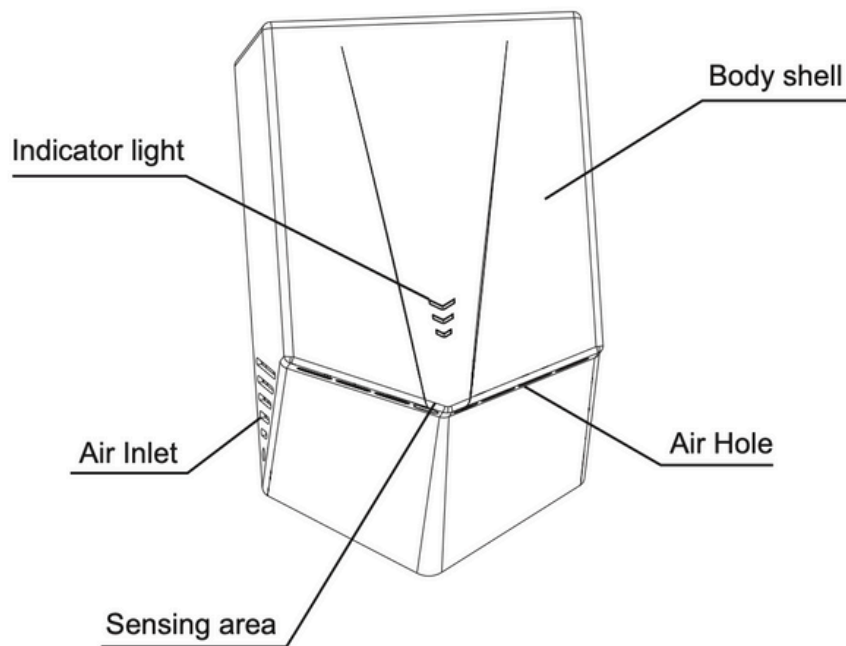
Page

3	Safety Precautions and Components
4	Packing List and Technical Information
5	Installation
6	Testing and Operation
7	Cleaning the Air Filter

Safety Precautions:

- This product must be installed by a qualified service person.
- Disconnect the power at the service breaker before installation or servicing.
- If the power supply cord is damaged, it must be replaced by the manufacturer, its service agent, or a similarly qualified person to avoid a hazard.
- A means for disconnection must be incorporated into the fixed wiring, in accordance with current wiring regulations.
- This appliance is not intended for use by persons (including children) with reduced physical, sensory or mental capabilities, unless they are supervised and instructed how to use the appliance by the person responsible for their safety.

Components:



Packing List:

Hand Dryer: 1 pc

User Manual: 1 pc

Plastic Anchor: 4 pcs (In Accessories Bag)

Screw: 4pcs (In Accessories Bag)

Allen Wrench: 1pc (In Accessories Bag)

Technical Information:

Power: 1300W

Drying Time: 7-9s

Rated Frequency: 50/60Hz

Waterproof Grade: IPX1

Air Velocity: 150m/s

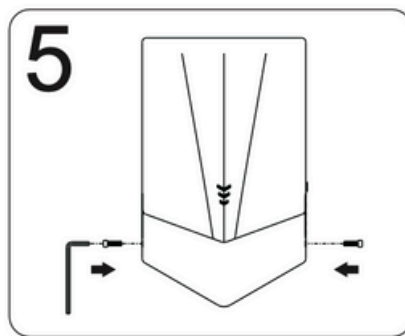
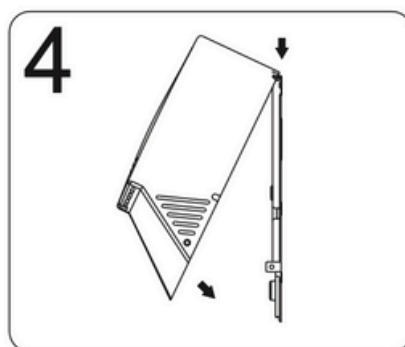
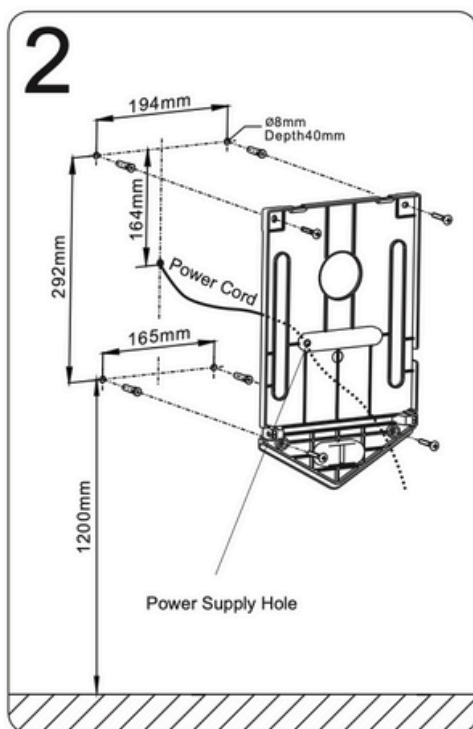
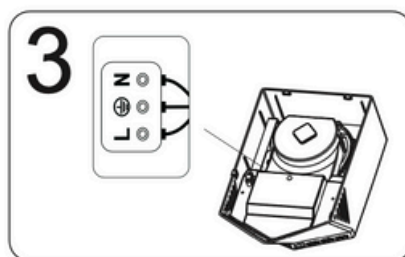
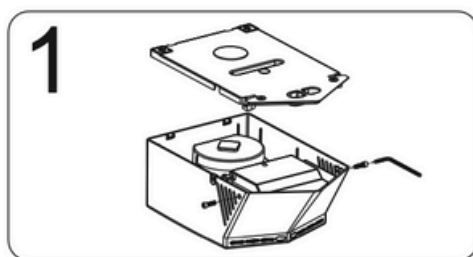
Noise(at 2M): 72dB

Installation:

- Use allen wrench from accessories bag to remove 2 countersunk screws from body shell. Pull the shell upward by hands to remove.
- Determine wall mounting location and use the hand dryer base as a template to mark 4 hole locations.
- Drill 4 holes and Insert plastic anchors. The machine has been equipped with a power cord, the cord can be removed on the inside by unscrewing it from the terminal. Feed power supply wires through power supply hole as shown in figure 2. Connect Live wire to terminal block "L". Connect Neutral wire to the terminal block "N" as show in figure 3.

Note: The machine has been equipped with a power cord, you can also use a wire stripper to cut the plug off and feed it through power supply hole to hard wire into your electrical box.

- Mount the unit to wall with screws as shown in figure 2.
- Tighten the 2 countersunk screws on the shell.

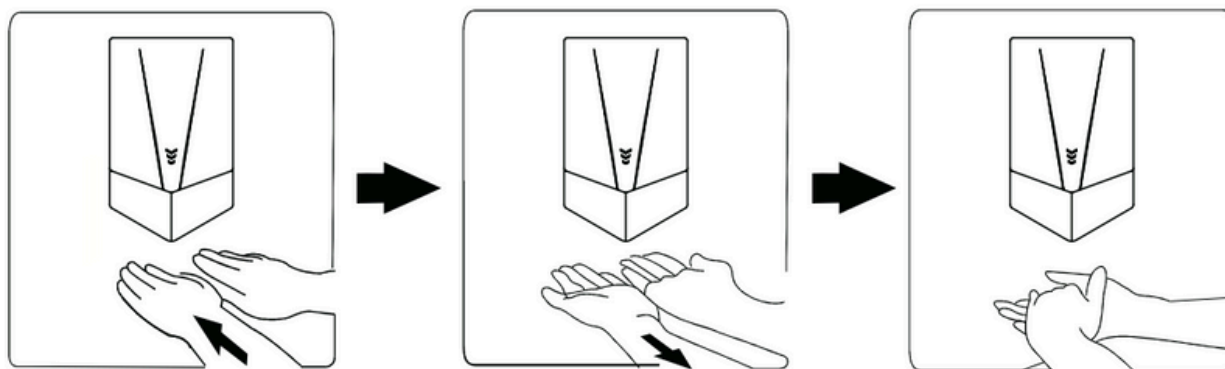


Testing:

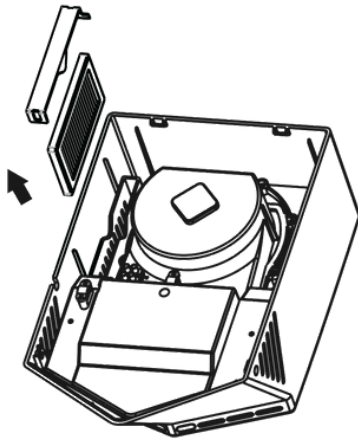
	Steps	Confirm Information	Check and Notice
1	Shake the machine gently	The machine is installed firmly without shaking	If not installed properly, the unit will shake and make noise during operation
2	Confirm the power and voltage	Please use the rated voltage	Incorrect voltage may burn out machines or cause accidents if the power use is incorrect
3	Switch on the power	Make sure the power cord is correctly wired	Please check the power flow when the indicator light is not bright
4	Slide hands under the hand dryer at correct distance to dry	Hand dryer should turn on with hands placed underneath	Confirm whether your hands are at the correct distance from the dryer if it does not turn on

Operation:

1. No touch operation.
2. Shake excess water from hands.
3. Place hands under outlet to start operation.
4. Rub hands lightly and rapidly.
5. Stops automatically after hands are removed.



Cleaning the Air Filter:

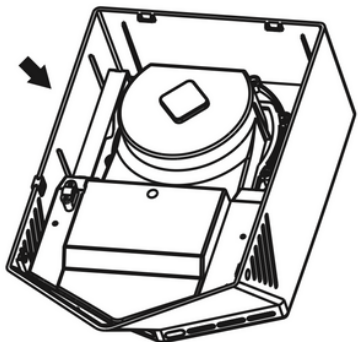


Open the air inlet panel ,Pull the air filter out by the handle as shown in figure.

Clean the air filter

Dust can be removed by hand, with a brush, or a vacuum cleaner.

Air filters can directly be cleaned with water, but make sure the filter is completely dry before re-use.



Re-attach to the unit.